

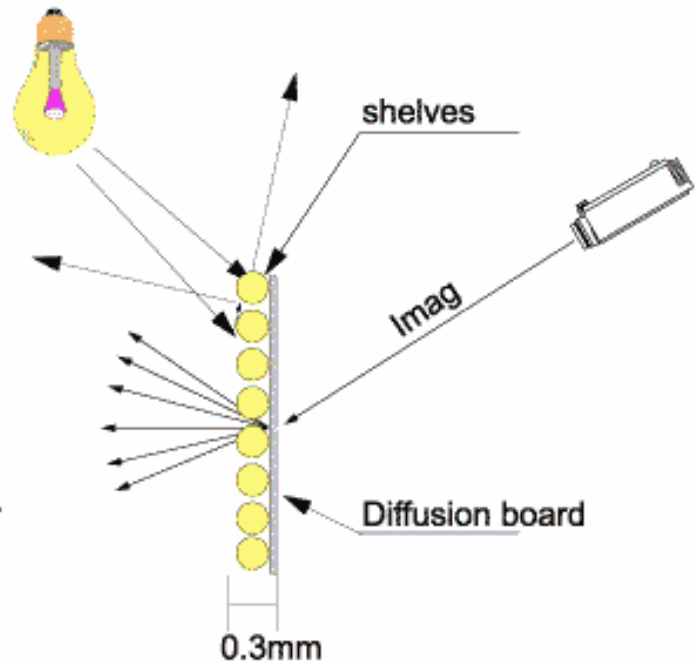
Technical Details

1-1 Screen Structure

High Contrast Screen:
 Patented technology "Black Shelves" prevent the room lighting or any environmental light affecting to the screen image, and keep the high contrast to the pictures.

Screen is consisted by 2 major part as the "Black Shelves" that is reflecting the environmental light, and the "Diffusion Board" that enables to make uniformed brightness on the screen.

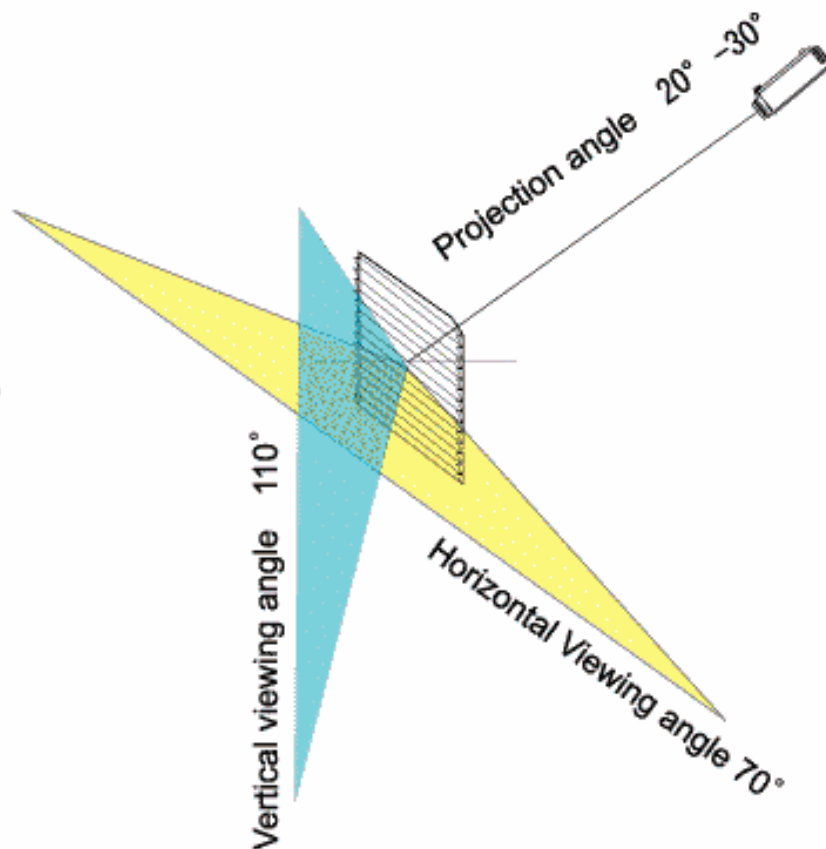
There are 2 types of the screens as soft type(film) or hard type(board) available. Soft film type can be put to the windows/show windows glass surface easily, and hard board type can be used with stand for floor setting or wire for ceiling mounting simply.



1-2 Each angle.

Projection/setting angle
 Projector for the screen can be installed ideally 20 - 30 degree degree range.

There will be viewing very wide angle as horizontally 70 degree, and vertically 110 degree.

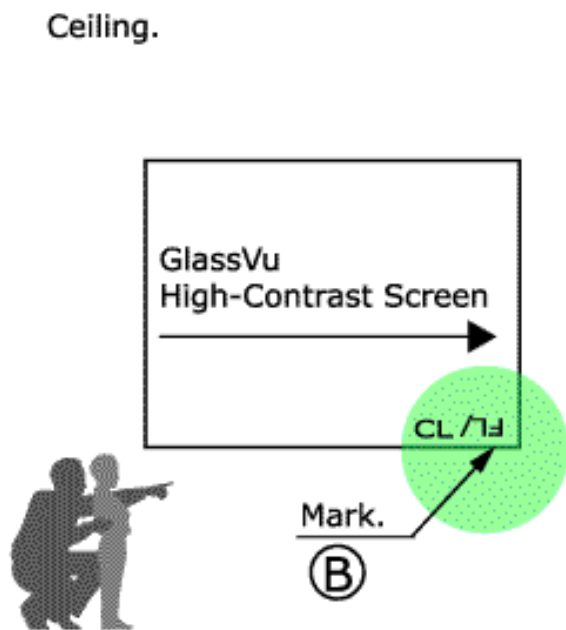
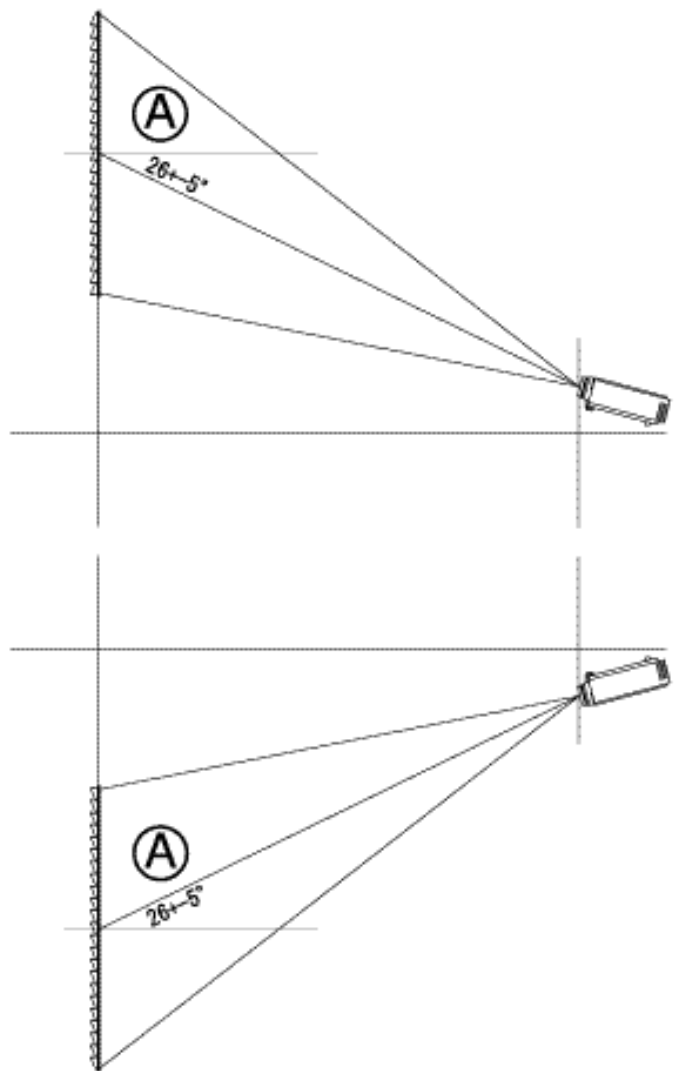
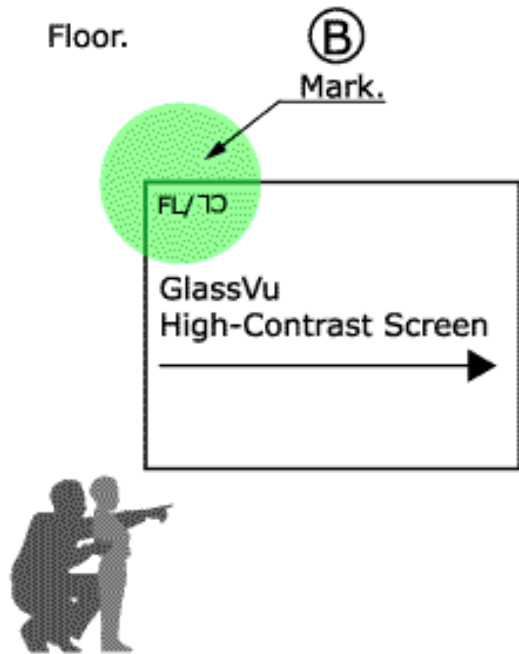


Technical Details

2-1 Installation tip

- (A) install the projector at an angle of $26 \pm 5^\circ$ to the centre of the screen
- (B) From the viewing side, the on-screen lettering should be at the top left corner for floor projection.
For ceiling projection, the on-screen lettering should be at the bottom right corner.

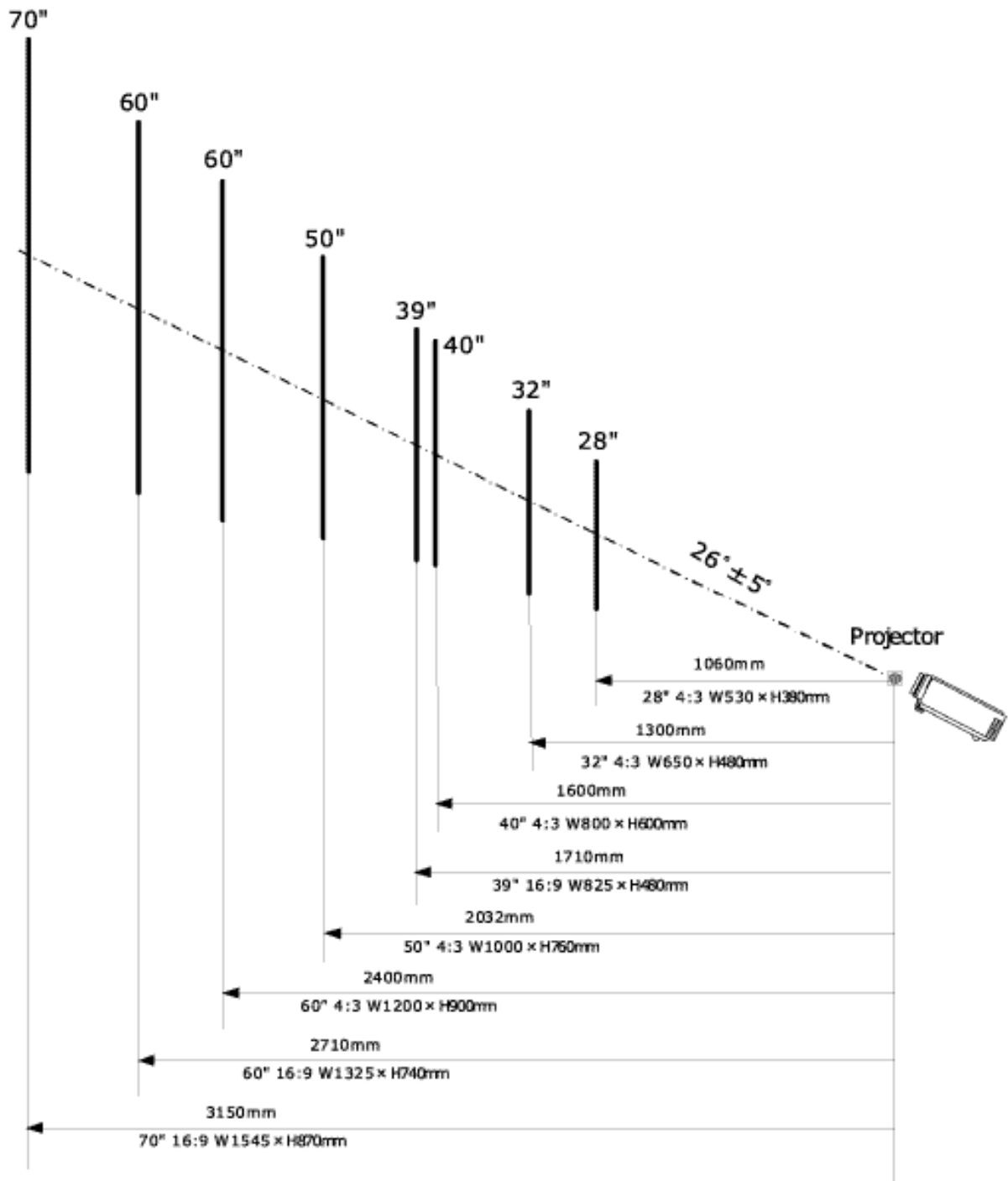
Caution: incorrect screen orientation will result in reduced image brightness



Technical Details

Eye-Catch Display System

3-1 Projection distance, Angle



Technical Details

Eye-Catch Display System

4-1 Anti-Reflection Film

Anti-Reflection Film for use with GlassVu rear projection screens

Unwanted and distracting reflections on the window glass surface can be eliminated using GlassVu Anti-Reflection film. The film's efficacy is achieved with minimal loss of brightness, color integrity etc. Transparent adhesive paste is coated on the film for attaching to the outside glass surface, so additional adhesive tape is not required

Details :

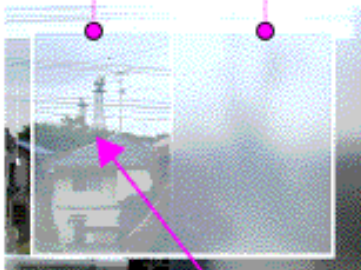
Product Name	: GlassVu Anti-Reflection film
Model	: WAF-60MX
Composition	: Clear anti-reflection film
Available sizes	: GlassVu 4:3 = 26", 32", 40", 50", 60" GlassVu 16:9 = 37", 60", 70"
Adhesive	: Special surface coated adhesive
Weight	: 1m ² /0.5g

*original image



Where the anti-reflection film is not applied, the background reflections can be seen on the glass surface

Where the anti-reflection film is applied, the background reflections are neutralized



Perfect reflection-free image using GlassVu anti-reflection film

■ Test conditions :

• Projector	PHILIPS C-Bright 1400Lm
• Screen	GlassVu film type 40"
• Daylight intensity	150,000Lx
• Weather conditions	Cloudy
• Time	11am

Background reflections can be seen on the projected image

Technical Details

Eye-Catch Display System

5-1 Recommended Brightness ranges

Recommended Brightness ranges for GlassVu™ Screens

*Environmental light level is about 10000~15000 Lux

26"	32"	40"	50"	60"
800 - 1000 ANSI Lumens				
	1000 - 1500 ANSI Lumens			
			1500 - 2000 ANSI Lumens	



Technical Details

6-1 Glassvu integrated projector/screen stand

Designed exclusively for use with GlassVu panel-type projection screens, the stand may be easily assembled using just a screwdriver.

Because the projector and screen positions are predetermined, special engineering or set-up knowhow is not required.

The stand unit is mounted on casters for easy movement and positioning.

Details:

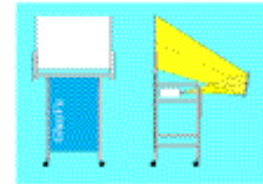
Product name : GlassVu integrated projector/screen stand

Models : WVS-37HSF, WVS-40SF, WVS-50SF

Material : Painted Steel

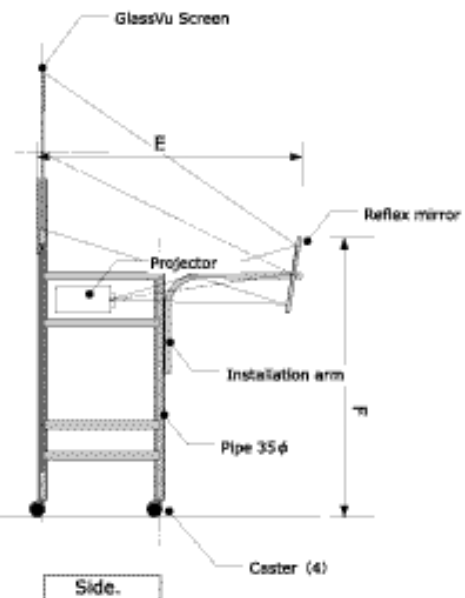
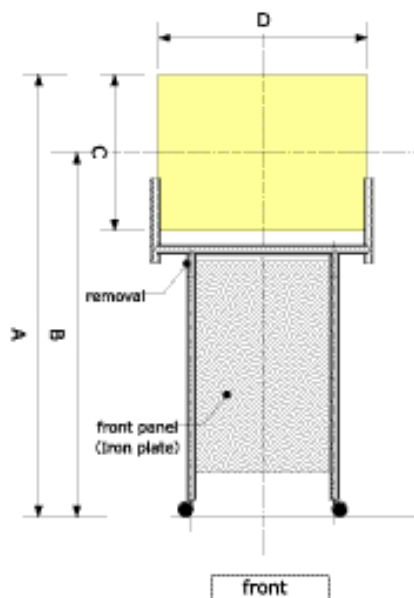
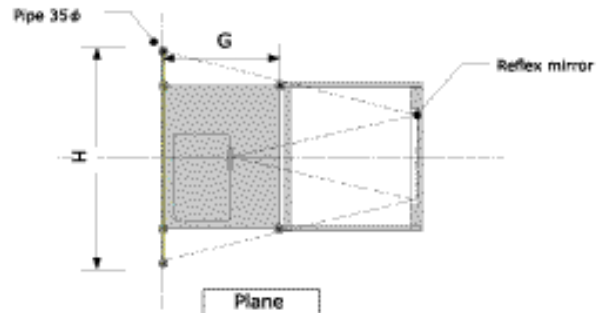
Screen sizes : GlassVu Panel 4:3(40", 50"), 16:9(37")

Weight : ????



Model	A	B	C	D	E	F	G	H
WVS-37HSF	1640	1400	480	855	1085	1050	450	905
WVS-40SF	1700	1400	600	800	1013	1070	450	850
WVS-50SF	1855	1478	762	1016	1267	1075	450	1066

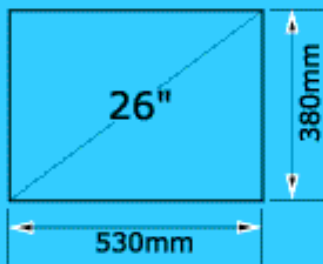
(mm)



Technical Details

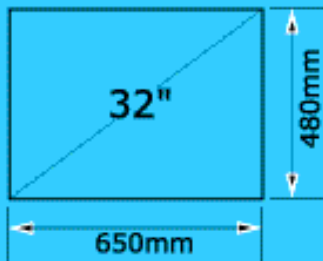
Eye-Catch Display System

7-1 4:3 GlassVu Screen Size



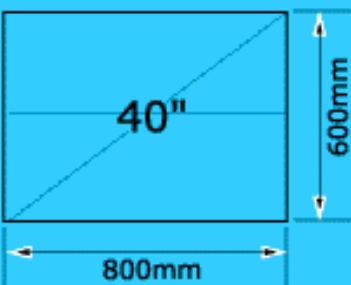
GlassVu Model:WVF26,WVP26

- Screen size : 32"(sheet film or single panel type)
- Horizontal viewing angle :70°
- Vertical Viewing angle : 105°
- Projection angle : 0-35°
(for optimal results, we recommend 26 +/- 5°)
- Resolution : 100 lines / 1mm
- Contrast Ratio : 500 :1



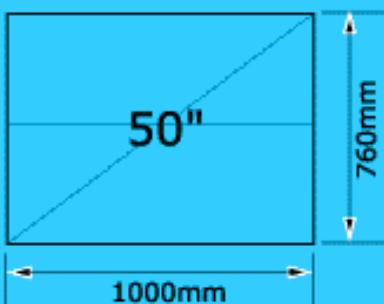
GlassVu Model:WVF32,WVP32

- Screen size : 32"(sheet film or single panel type)
- Horizontal viewing angle :70°
- Vertical Viewing angle : 105°
- Projection angle : 0-35°
(for optimal results, we recommend 26 +/- 5°)
- Resolution : 100 lines / 1mm
- Contrast Ratio : 500 :1



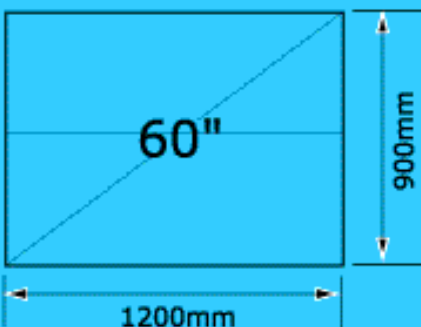
GlassVu Model:WVF40,WVP40

- Screen size : 40" (sheet film or single panel type)
Larger than 32" screens as 40", 50", or 60", there will be screen seam in the middle of the screen as the horizontal line, which is less than 0.2mm width.
- Horizontal viewing angle :70°
- Vertical Viewing angle : 105°
- Projection angle : 0-35° (for optimal results, we recommend 26 +/- 5°)
- Resolution : 100 lines / 1mm
- Contrast Ratio : 500 :1



GlassVu Model:WVF50,WVP50

- Screen size : 50" (sheet film or single panel type)
Larger than 32" screens as 40", 50", or 60", there will be screen seam in the middle of the screen as the horizontal line, which is less than 0.2mm width.
- Horizontal viewing angle :70°
- Vertical Viewing angle : 105°
- Projection angle : 0-35° (for optimal results, we recommend 26 +/- 5°)
- Resolution : 100 lines / 1mm
- Contrast Ratio : 500 :1



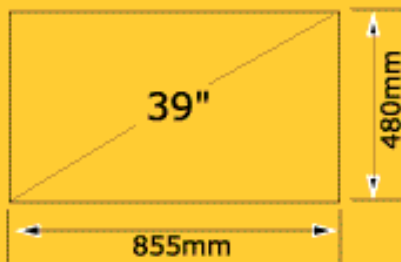
GlassVu Model:WVF60,WVP60

- Screen size : 60" (sheet film or single panel type)
Larger than 32" screens as 40", 50", or 60", there will be screen seam in the middle of the screen as the horizontal line, which is less than 0.2mm width.
- Horizontal viewing angle :70°
- Vertical Viewing angle : 105°
- Projection angle : 0-35° (for optimal results, we recommend 26 +/- 5°)
- Resolution : 100 lines / 1mm
- Contrast Ratio : 500 :1

Technical Details

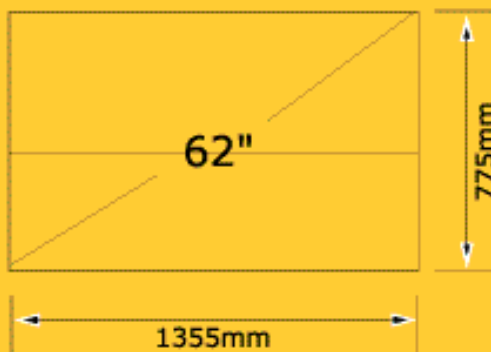
Eye-Catch Display System

8-1 16:9 GlassVu Screen Size



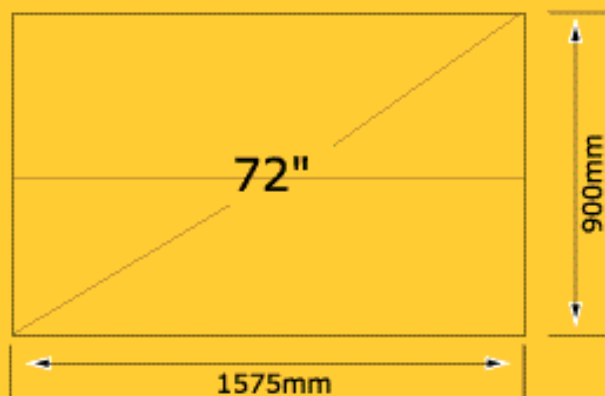
GlassVu Model:WVF91632

- Screen size : 39"(sheet film or single panel type)
- Horizontal viewing angle :70°
- Vertical Viewing angle : 105°
- Projection angle : 20-31°
(for optimal results, we recommend 26 +/- 5°)
- Resolution : 100 lines / 1mm
- Contrast Ratio : 500 :1



GlassVu Model:WVF91660

- Screen size : 62" (sheet film or single panel type)
Larger than 39" screens as 62", or 72", there will be screen seam in the middle of the screen as the horizontal line,which is less than 0.2mm width.
- Horizontal viewing angle :70°
- Vertical Viewing angle : 105°
- Projection angle : 20-31°
(for optimal results, we recommend 26 +/- 5°)
- Resolution : 100 lines / 1mm
- Contrast Ratio : 500 :1



GlassVu Model:WVF91670

- Screen size : 72" (sheet film or single panel type)
Larger than 39" screens as 62", or 72", there will be screen seam in middle of the screen as the horizontal line, which is less than 0.2mm width.
- Horizontal viewing angle :70°
- Vertical Viewing angle : 105°
- Projection angle : 20-31°
(for optimal results, we recommend 26 +/- 5°)
- Resolution : 100 lines / 1mm
- Contrast Ratio : 500 :1

Technical Details

Eye-Catch Display System

10 -1 Specification

Products Name	: GlassVu / LumenStar / LumenStar multi-screen.
*commonness specification.	
GlassVu	:
Screen size	: 4:3 (26",32",40",50",60" 100) diagonal. 16:9(37",60",70") diagonal. *32"(sheet film or single panel type).
*Aspect ratio	: 4:3, 16:9 or any other(application dependent).
*Resolution	: 100lines/mm.
*Contrast ratio	: 500:1.
Horizontal viewing angle	: 70° .
Vertical Viewing angle	: 105° .
Projection angle	: 0-35 (for optimal results, we recommend 26 +/- 5°).
*Color reproduction	: 16,000,000cilors.
Film thickness	: 0.3mm.
Film composition	: Black shelves,Diffusion board.
Film type screen weight	: approx 1.0kg/m ² case of 0.3mm thickness.
Panel type screen weight	: approx 0.8kg/m ² case of 4.5mm thickness.
*Ultra violet light susceptibility	: none
*Infra red light susceptibility	: none
*Humidity lange	: 0-100%
*Storage temperature	: 0°C-50°C
LumenStar	:
Screen size	: 26",32",40",50",60" ,80",100",120"diagonal.
Horizontal viewing angle	: 120° .
Vertical Viewing angle	: 100° .
Projection angle	: 0-35° .
LumenStar multi-screen	: Using the 60" screen as a base, LumenStar multi-screen systems may be configured freely, depending on the application.